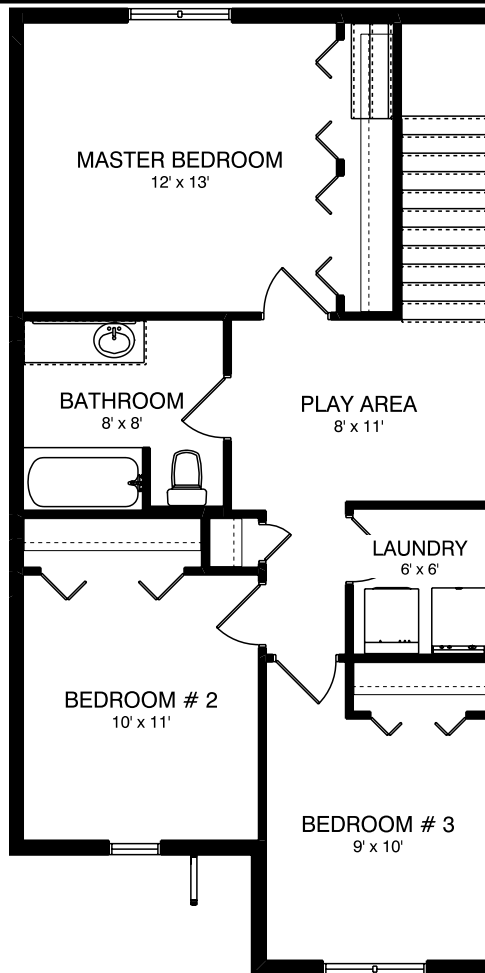
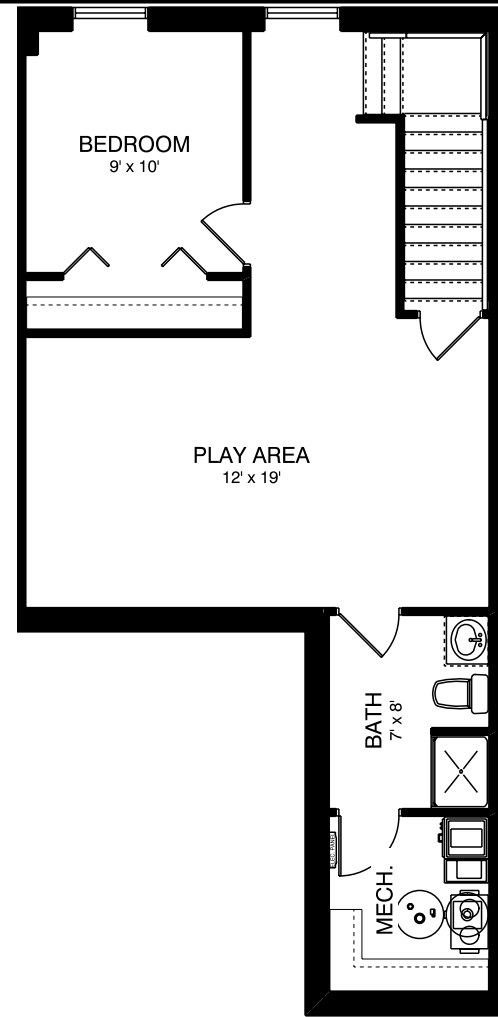


UNIT #9 - Main Floor



UNIT #9 - 2nd Floor



UNIT #9 - Basement Floor

UNIT #9	
NAME	AREA
MAIN FLOOR	648 ft ²
2nd FLOOR	750 ft ²
TOTAL LIVING	1,398 ft²
BASEMENT	646 ft ²
GARAGE	290 ft ²
PATIO	242 ft ²

PINNACO INC.
 Box 1663 Winkler, Manitoba R6W 4B5
 (204) 325-3909
 www.pinnaco.com

****NOT FOR CONSTRUCTION****
 NOT TO SCALE
 MAY NOT BE EXACTLY AS SHOWN

MEMBER OF: New Home Warranty Program of Manitoba Inc.

UNITS #8 - #13
 ADDRESS: 1350 Elantra Drive
 CITY: Winkler

DATE: March 24, 2023

PAGE: 2