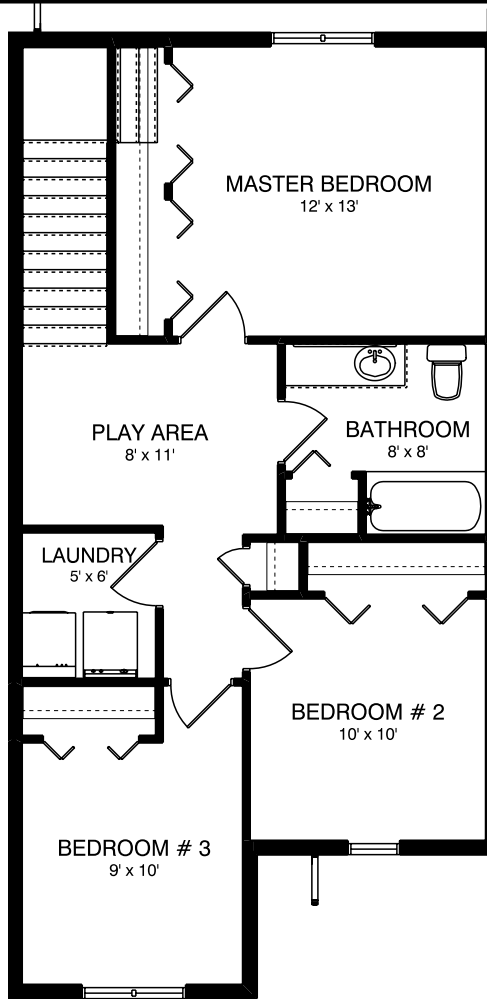
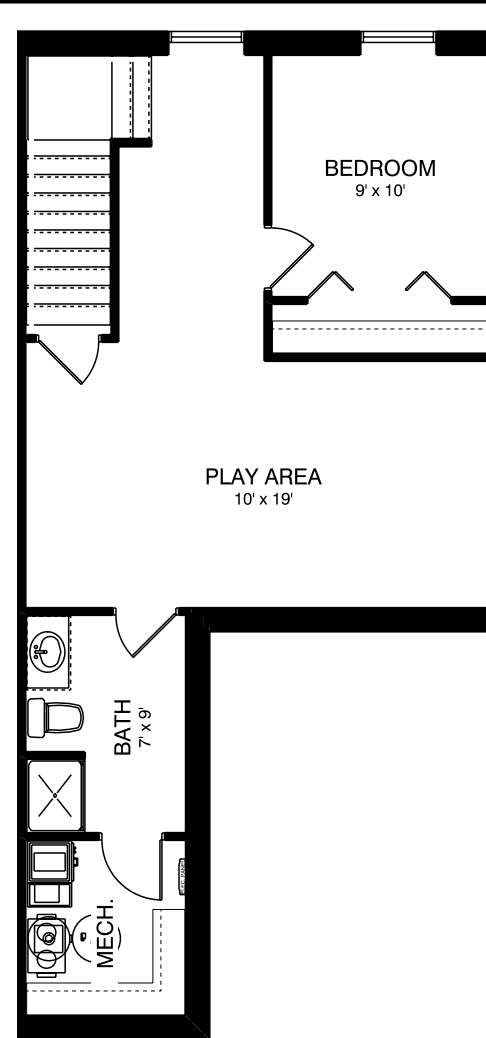


UNIT #18 - Main Floor



UNIT #18 - 2nd Floor



UNIT #18 - Basement Floor

UNIT #18	
NAME	AREA
MAIN FLOOR	648 ft ²
2nd FLOOR	740 ft ²
TOTAL LIVING	1,388 ft²
BASEMENT	636 ft ²
GARAGE	290 ft ²
PATIO	300 ft ²

PINNACO INC.
 Box 1663 Winkler, Manitoba R6W 4B5
 (204) 325-3909
 www.pinnaco.com

****NOT FOR CONSTRUCTION****
 NOT TO SCALE
 MAY NOT BE EXACTLY AS SHOWN

MEMBER OF: New Home Warranty Program of Manitoba Inc.

UNITS # 14-19
 ADDRESS: 1350 Elantra Drive
 CITY: Winkler

DATE: August 06, 2024

PAGE: 5